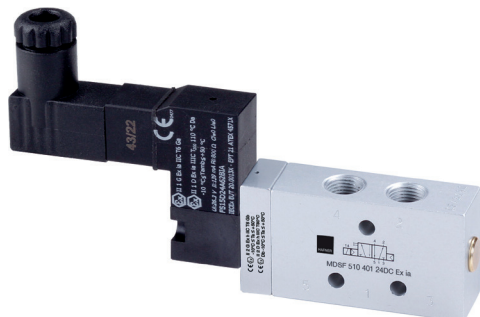


ATEX-approved valves – Ex ia 0.7W – standard temperature range – aluminum



Material: Aluminum, anodized
 Zone: 1, 2, 21, 22
 Temperature range: -10°C ... +50°C ❄️
 Ignition protection type: 24DC Ex ia (intrinsic safety)
 Temperature class: T6

Marking on valve: **CE** **Ex** II 2 G Ex h IIC T6 Gb
 -40°C ≤ Ta ≤ +50°C
CE **Ex** II 2 D Ex h IIC T80°C
 Db -40°C ≤ Ta ≤ +50°C

The following solenoid valves are available:

Type	Function	Port size	Installation	Further information on valve on page
MDSF 210 501 24DC Ex ia	2/2-way, single sol.	G 1/8"	in-line	2.5.1.1.9
MDSF 210 701 24DC Ex ia	2/2-way, single sol.	G 1/4"	in-line	2.5.1.1.9
MDSF 310 401 24DC Ex ia	3/2-way, single sol.	G 1/8"	in-line	2.5.1.1.8
MDSF 310 501 G 24DC Ex ia	3/2-way, single sol.	G 1/8"	dual use*	2.5.1.1.10
MODSF 310 501 G 24DC Ex ia	3/2-way, n.o. single sol.	G 1/8"	dual use*	2.5.1.1.10
MDSF 310 701 G 24DC Ex ia	3/2-way, single sol.	G 1/4" - 1/4" NPT	dual use*	2.5.1.1.10
MODSF 310 701 G 24DC Ex ia	3/2-way, n.o. single sol.	G 1/4" - 1/4" NPT	dual use*	2.5.1.1.10
MDSF 310 121 24DC Ex ia	3/2-way, single sol.	G 1/2" - 1/2" NPT	in-line	2.5.1.1.11
MODSF 310 121 24DC Ex ia	3/2-way, n.o. single sol.	G 1/2" - 1/2" NPT	in-line	2.5.1.1.11
MDSF 510 401 24DC Ex ia	5/2-way, single sol.	G 1/8"	in-line	2.5.2.1.1
MDSF 510 501 G 24DC Ex ia	5/2-way, single sol.	G 1/8"	dual use*	2.5.2.1.2
MDSF 510 701 G 24DC Ex ia	5/2-way, single sol.	G 1/4" - 1/4" NPT	dual use*	2.5.2.1.2
MDSF 510 121 24DC Ex ia	5/2-way, single sol.	G 1/2" - 1/2" NPT	in-line	2.5.2.1.3
MDSF 520 401 24DC Ex ia	5/2-way, single sol.	G 1/8"	in-line	2.5.2.1.4
MDSF 520 501 G 24DC Ex ia	5/2-way, double sol.	G 1/8"	dual use*	2.5.2.1.5
MDSF 520 701 G 24DC Ex ia	5/2-way, double sol.	G 1/4" - 1/4" NPT	dual use*	2.5.2.1.5
MDSF 520 121 24DC Ex ia	5/2-way, double sol.	G 1/2" - 1/2" NPT	in-line	2.5.2.1.6
MDSF 53_ 501 G 24DC Ex ia	5/3-way, diff. versions	G 1/8"	dual use*	2.5.3.1.2
MDSF 53_ 701 G 24DC Ex ia	5/3-way, diff. versions	G 1/4"	dual use*	2.5.3.1.2
MDSF 53_ 121 24DC Ex ia	5/3-way, diff. versions	G 1/2" - 1/2" NPT	in-line	2.5.3.1.3

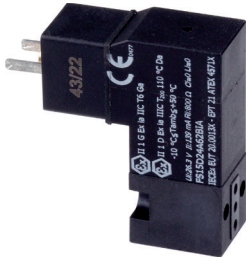
Valves with interface according to NAMUR-standard

MNDSF 350 701 24DC Ex ia	3/2-way & 5/2-way	G 1/4" - 1/4" NPT	1/4" NAMUR	2.10.1.3
MNDSF 310 701 24DC Ex ia	3/2-way, single sol.	G 1/4" - 1/4" NPT	1/4" NAMUR	2.10.1.1.1
MNDSF 311 701 24DC Ex ia	3/2-way, comb. spring	G 1/4" - 1/4" NPT	1/4" NAMUR	2.10.1.1.1
MNDSF 310 711 24DC Ex ia	3/2-way, single sol.	G 1/4"	1/4" NAMUR	2.10.1.1.1
MNDSF 310 121 24DC Ex ia	3/2-way, single sol.	G 1/2" - 1/2" NPT	1/2" NAMUR	2.10.1.1.2
MNDSF 311 121 24DC Ex ia	3/2-way, comb. spring	G 1/2" - 1/2" NPT	1/2" NAMUR	2.10.1.1.2
MNDSF 510 701 24DC Ex ia	5/2-way, single sol.	G 1/4" - 1/4" NPT	1/4" NAMUR	2.10.1.2.1
MNDSF 511 701 24DC Ex ia	5/2-way, comb. spring	G 1/4" - 1/4" NPT	1/4" NAMUR	2.10.1.2.1
MNDSF 510 711 24DC Ex ia	5/2-way, single sol.	G 1/4"	1/4" NAMUR	2.10.1.2.1
MNDSF 510 121 24DC Ex ia	5/2-way, single sol.	G 1/2" - 1/2" NPT	1/2" NAMUR	2.10.1.2.2
MNDSF 511 121 24DC Ex ia	5/2-way, comb. spring	G 1/2" - 1/2" NPT	1/2" NAMUR	2.10.1.2.2
MNDSF 520 701 24DC Ex ia	5/2-way, double sol.	G 1/4" - 1/4" NPT	1/4" NAMUR	2.10.1.2.3
MNDSF 520 121 24DC Ex ia	5/2-way, double sol.	G 1/2" - 1/2" NPT	1/2" NAMUR	2.10.1.2.3
MNDSF 53_ 701 24DC Ex ia	5/3-way, diff. versions	G 1/4" - 1/4" NPT	1/4" NAMUR	2.10.1.2.4
MNDSF 53_ 121 24DC Ex ia	5/3-way, diff. versions	G 1/2" - 1/2" NPT	1/2" NAMUR	2.10.1.2.4

Direct acting valves available on request.
 Solenoids described on page 2.15.6.4.2.
 Delivery contains valve with the appropriate coil, connector,
 manual and declaration of conformity.

FES 15 3/2 NC 24DC Ex ia

When this solenoid system is used in combination with „ATEX certified“ mechanical components conforming EN 13463-1:2001 and PrEN 13463-5:2000, the entire valve can be used in explosive hazardous environment zone 1, 2, 21, and 22.



ATEX approved intrinsic safety coil and connector for gas and dust explosion-hazardous environment. System is also IECEx approved. Electrical connector with two pins according to form C (EN 175301-803).

Rated Characteristics: Un: 24V
In: 30.0 mA
Pn: 0.72 W
Winding resistance: 800 Ω +/- 5%

Safety Parameters: Ui: 26.3 V
Li: 139 mA
Li: negligible
Ci: negligible

Voltage tolerance: -10...+10 %

Relative duty cycle: 100 %

Temperature range: -10°...+50° C

Pressure range: See valve specifications
max. 8 bar

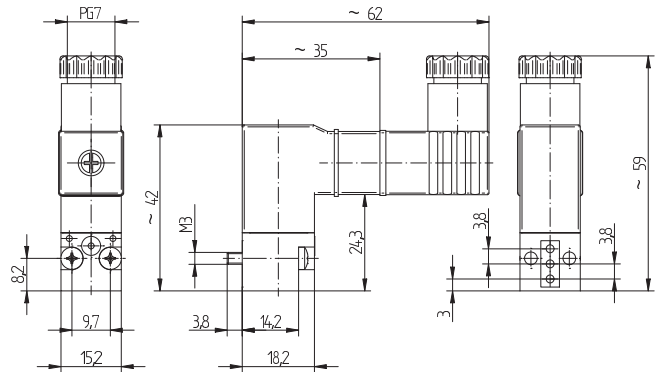
Insulation class of insulating materials according to DIN VDE 0580: F

Protection with mounted plug-in connector according to IEC 529: IP 65

Moulding material: Glass fiber reinforced PA

Marking on coil:   II 1G Ex ia II CT6 Ga
II 1D Ex ia II CT85°C Da

Cable diameter: 3.5 – 6.0 mm



FES 15 3/2 NC 24DC Ex ia



Connector included.

The ATEX approval is only valid as long as the **associated components are used.**