

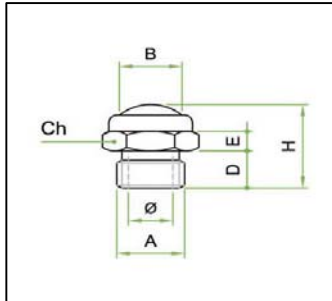
Lieferprogramm Schalldämpfer



Kurz mit Drahtgeflecht



Size	Typ
M5	290U-M5
G1/8"	290U-1/8
G1/4"	290U-1/4
G3/8"	290U-3/8
G1/2"	290U-1/2
G3/4"	290U-3/4
G1"	290U-1



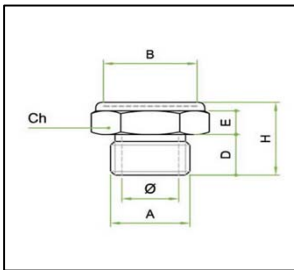
A	Ø	B	D	E	H	Ch
M5	2,5	5,5	4	3	8	8
1/8"	6	9,5	6	4	15	13
1/4"	8,5	11	8	5	18	16
3/8"	11,5	14,5	8	5	20	19
1/2"	15	19	10	6	22	24
3/4"	20	24	10	6	26	30
1"	26	31	10	6	28	36

Auf Anfrage in Edelstahl

Kurz mit Sinterersatz



Size	Typ
G1/8"	291U-1/8
G1/4"	291U-1/4
G3/8"	291U-3/8
G1/2"	291U-1/2
G3/4"	291U-3/4

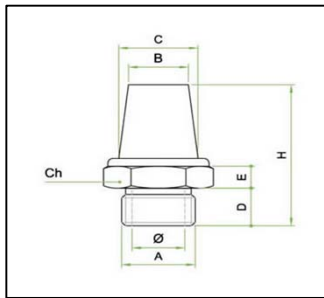


A	Ø	B	D	E	H	Ch
1/8"	6	9	6	4	12	13
1/4"	8,5	11	8	5	16	16
3/8"	11,5	14	8	5	17	19
1/2"	15	19	10	6	18	24
3/4"	20	25	10	6	19	30

Lang



Size	Typ
M5	293U-M5
G1/8"	293U-1/8
G1/4"	293U-1/4
G3/8"	293U-3/8
G1/2"	293U-1/2
G3/4"	293U-3/4
G1"	293U-1

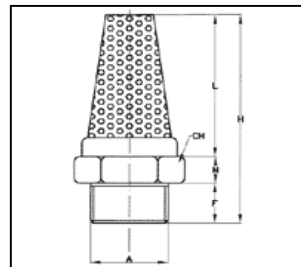


A	Ø	B	C	D	E	H	Ch
M5	2,5	3	4	4	3	17	8
1/8"	6	8	8,5	6	4	26	13
1/4"	8,5	9	10,5	8	5	34	16
3/8"	11,5	12	13	8	5	41	19
1/2"	15	16	18	10	6	46	24
3/4"	20	21	25,5	10	6	56	30
1"	26	26,5	30,5	10	6	66	36

Extra lang



Size	Typ
G1/8"	294U-1/8
G1/4"	294U-1/4
G3/8"	294U-3/8
G1/2"	294U-1/2
G3/4"	294U-3/4



A	N	F	L	H	CH
1/8"	4	6	32	42	13
1/4"	5	7	35	47	16
3/8"	5	8	39	52	19
1/2"	5	10	52	67	24
3/4"	5	10	59	74	30

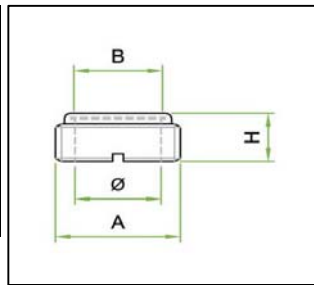
Lieferprogramm Schalldämpfer



Versenkbar



Size	Typ
G1/8"	SPC 1/8
G1/4"	SPC 1/4
G3/8"	SPC 3/8
G1/2"	SPC 1/2
G3/4"	SPC 3/4

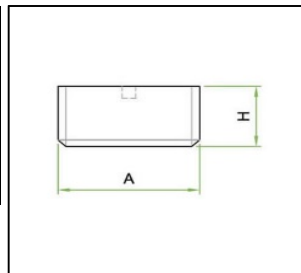


A	Ø	B	H
1/8"	5,5	5,5	4,5
1/4"	6	8	6
3/8"	9,5	9	7
1/2"	12,5	12	9
3/4"	19	20	9

Versenkbar



Size	Typ
G1/8"	SPCI 1/8
G1/4"	SPCI 1/4
G3/8"	SPCI 3/8
G1/2"	SPCI 1/2

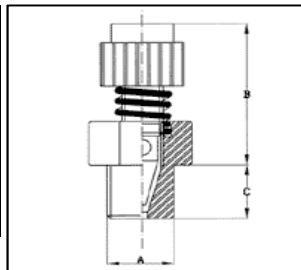


A	H
1/8"	6,5
1/4"	7
3/8"	7,5
1/2"	8

Drosselschalldämpfer, einfach



Size	Typ
G1/8"	SVE-1/8C
G1/4"	SVE-1/4C
G3/8"	SVE-3/8C
G1/2"	SVE-1/2C
G3/4"	SVE-3/4C

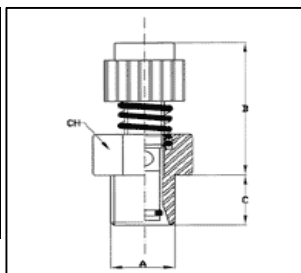


A	MIN B	MAX B	C
1/8"	20	22	6
1/4"	22	24	8
3/8"	25	28	10
1/2"	26	29	11
3/4"	32	37	12

Drosselschalldämpfer, unverlierbar



Size	Typ
G1/8"	SVER-1/8C
G1/4"	SVER-1/4C
G3/8"	SVER-3/8C
G1/2"	SVER-1/2C

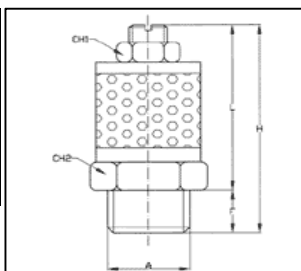


A	MIN B	MAX B	F	CH
1/8"	14	19	6	12
1/4"	17	22	8	15
3/8"	18	24	9	19
1/2"	18	24	10,5	22

Drosselschalldämpfer, arret.



Size	Typ
G1/8"	SVL-1/8C
G1/4"	SVL-1/4C
G3/8"	SVL-3/8C
G1/2"	SVL-1/2C



A	F	LMN	LMAX	HMN	HMAX	CH1	CH2
1/8"	8	30	36	38	44	10	16
1/4"	9	30	36	39	45	10	16
3/8"	10	37	50	47	60	10	22
1/2"	11	37	50	48	61	10	22

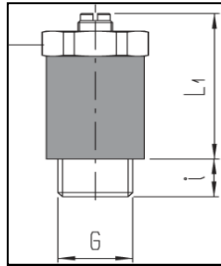
Lieferprogramm Schalldämpfer



Drosselschalldämpfer, Präzision



Size	Typ
G1/8"	SSC-219M-1/8
G1/4"	SSC-219M-1/4

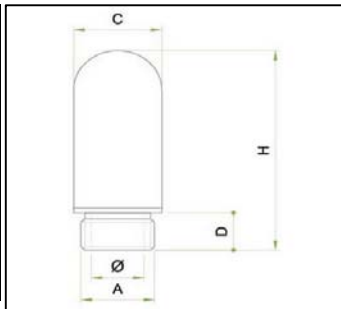


G	S	i	L1
1/8"	14	5	30
1/4"	17	7,5	31

Polyethylenschalldämpfer



Size	Typ
M5	A-07100-M5
G1/8"	A-07100-1/8
G1/4"	A-07100-1/4
G3/8"	A-07100-3/8
G1/2"	A-07100-1/2
G3/4"	A-07100-3/4
G1"	A-07100-1

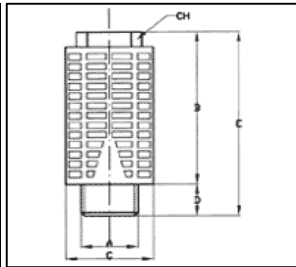


A	Ø	C	D	H
M 5	3	7,5	4	24,5
1/8"	5	13	7	33,5
1/4"	6,5	17	8	40
3/8"	10,5	25	11	65
1/2"	12	25	11	71
3/4"	16	37	15,5	138
1"	22	47,5	19	157

Acrylschalldämpfer



Size	Typ
G1/8"	SPL-1/8
G1/4"	SPL-1/4
G3/8"	SPL-3/8
G1/2"	SPL-1/2
G3/4"	SPL-3/4
G1"	SPL-1



A	B	C	D	E	CH
1/8"	28	16	6	34	10
1/4"	36	19	8	44	12
3/8"	47	24	10	56	16
1/2"	47	24	10	56	16
3/4"	90	50	28	118	25
1"	90	50	28	118	25

Auf Anfrage in schwarz