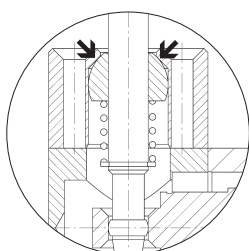


# 2.3

## Lever Actuated Valves

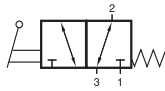


Instead of a rubber-gaitor that never lasts long, Hafner seals all the lever valves with a metallic seal.

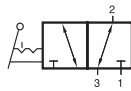


Selected models are available for low temperature application.  
Temperature-range: - 50° C to + 50° C.  
For detailed information refer to chapter 2.9.

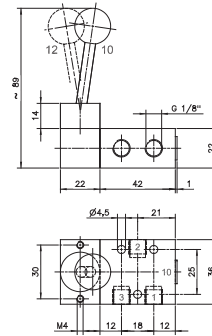
# HV 311 501/HV 311 701/HV 311 801 HVR 320 501/HVR 320 701/HVR 320 801



HV 311 501  
HV 311 701  
HV 311 801  
HV 311 701 NPT



HVR 320 501  
HVR 320 701  
HVR 320 801  
HVR 320 701 NPT



**HV 311 501/HVR 320 501**

Lever actuated 3/2-way spool valve.

Type HV      spring return  
Type HVR     indexed

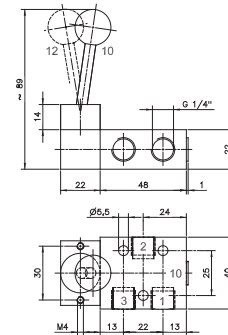
If pressure is applied to port 1 the function is normally closed.

If pressure is applied to port 3 the function is normally open.

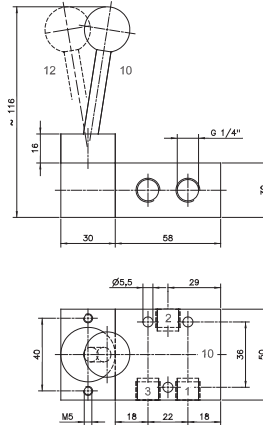
The lever is sealed against the valve by using a metal ball.

Exhaust can be throttled.

*Selected products displayed on this page are also available NPT threaded.*



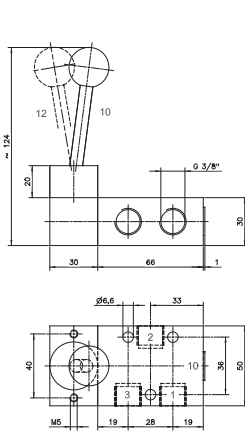
**HV 311 701/HVR 320 701  
HV 311 701 NPT/HVR 320 701 NPT**



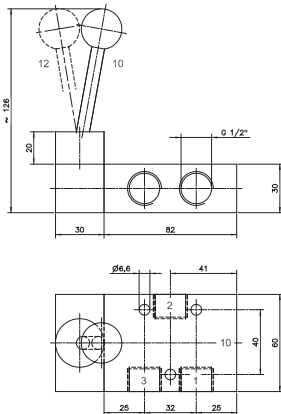
**HV 311 801/HVR 320 801**

Type	Function	Port size	Air flow	Operating press.	Actuating force	Weight
HV 311 501	spring ret.	G 1/8"	650 l/min	1 - 10 bar	20 N	0,19 kg ❄️
HV 311 701	spring ret.	G 1/4"	1250 l/min	1 - 10 bar	20 N	0,20 kg ❄️
HV 311 801	spring ret.	G 1/4"	1450 l/min	1 - 10 bar	25 N	0,46 kg ❄️
HVR 320 501	indexed	G 1/8"	650 l/min	1 - 10 bar	20 N	0,19 kg ❄️
HVR 320 701	indexed	G 1/4"	1250 l/min	1 - 10 bar	20 N	0,20 kg ❄️
HVR 320 801	indexed	G 1/4"	1450 l/min	1 - 10 bar	25 N	0,46 kg ❄️
HV 311 701 NPT	spring ret.	1/4" NPT	1250 l/min	1 - 10 bar	20 N	0,20 kg
HVR 320 701 NPT	indexed	1/4" NPT	1250 l/min	1 - 10 bar	20 N	0,20 kg

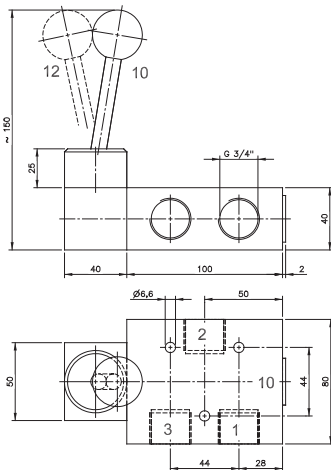
# HV 311 101/HV 311 121/HV 311 181 HVR 320 101/HVR 320 121/HVR 320 181



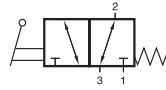
**HV 311 101/HVR 320 101**



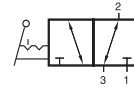
**HV 311 121/HVR 320 121  
HV 311 121 NPT/HVR 320 121 NPT**



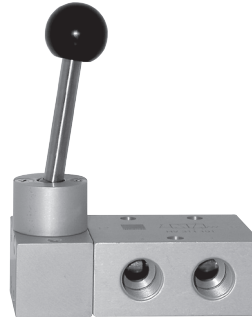
**HV 311 181/HVR 320 181**



HV 311 101  
HV 311 121  
HV 311 181  
HV 311 121 NPT



HVR 320 101  
HVR 320 121  
HVR 320 181  
HVR 320 121 NPT



Lever actuated 3/2-way spool valve.

Type HV      spring return  
Type HVR    indexed

If pressure is applied to port 1 the function is normally closed.

If pressure is applied to port 3 the function is normally open.

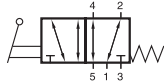
The lever is sealed against the valve by using a metal ball.

Exhaust can be throttled.

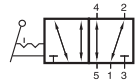
*Selected products displayed on this page are also available NPT threaded.*

Type	Function	Port size	Air flow	Operating press.	Actuating force	Weight
HV 311 101	spring ret.	G 3/8"	2250 l/min	1 - 10 bar	25 N	0,49 kg
HV 311 121	spring ret.	G 1/2"	3000 l/min	1 - 10 bar	32 N	0,69 kg
HV 311 181	spring ret.	G 3/4"	6000 l/min	1 - 10 bar	40 N	1,31 kg
HVR 320 101	indexed	G 3/8"	2250 l/min	1 - 10 bar	25 N	0,49 kg
HVR 320 121	indexed	G 1/2"	3000 l/min	1 - 10 bar	32 N	0,69 kg
HVR 320 181	indexed	G 3/4"	6000 l/min	1 - 10 bar	40 N	1,31 kg
HV 311 121 NPT	spring ret.	1/2" NPT	3000 l/min	1 - 10 bar	32 N	0,69 kg
HVR 320 121 NPT	indexed	1/2" NPT	3000 l/min	1 - 10 bar	32 N	0,69 kg

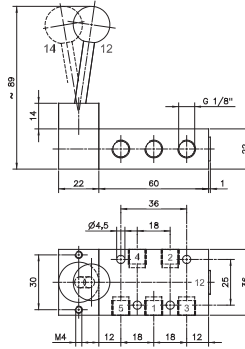
# HV 511 501/HV 511 701/HV 511 801 HVR 520 501/HVR 520 701/HVR 520 801



HV 511 501  
HV 511 701  
HV 511 801  
HV 511 701 NPT



HVR 520 501  
HVR 520 701  
HVR 520 801  
HVR 520 701 NPT



**HV 511 501/HVR 520 501**

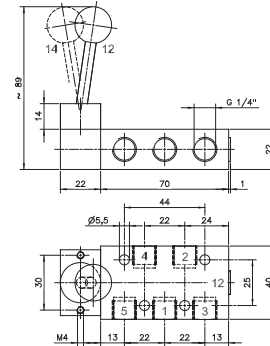
Lever actuated 5/2-way spool valve.

Type HV spring return  
Type HVR indexed

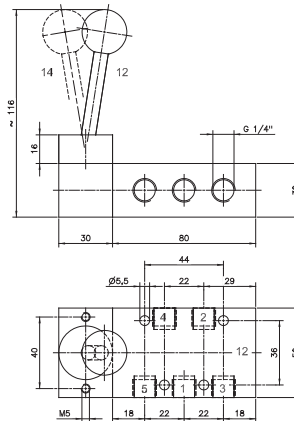
The lever is sealed against the valve by using a metal ball.

Exhaust can be throttled.

*Selected products displayed on this page are also available NPT threaded.*



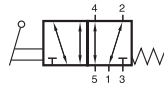
**HV 511 701/HVR 520 701  
HV 511 701 NPT/HVR 520 701 NPT**



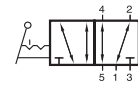
**HV 511 801/HVR 520 801**

Type	Function	Port size	Air flow	Operating press.	Actuating force	Weight
HV 511 501	spring ret.	G 1/8"	650 l/min	1 - 10 bar	20 N	0,22 kg ❄️
HV 511 701	spring ret.	G 1/4"	1250 l/min	1 - 10 bar	20 N	0,24 kg ❄️
HV 511 801	spring ret.	G 1/4"	1450 l/min	1 - 10 bar	25 N	0,55 kg
HVR 520 501	indexed	G 1/8"	650 l/min	1 - 10 bar	20 N	0,22 kg ❄️
HVR 520 701	indexed	G 1/4"	1250 l/min	1 - 10 bar	20 N	0,24 kg ❄️
HVR 520 801	indexed	G 1/4"	1450 l/min	1 - 10 bar	25 N	0,55 kg
HV 511 701 NPT	spring ret.	1/4" NPT	1250 l/min	1 - 10 bar	20 N	0,24 kg
HVR 520 701 NPT	indexed	1/4" NPT	1250 l/min	1 - 10 bar	20 N	0,24 kg

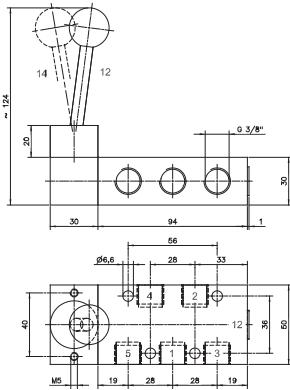
# HV 511 101/HV 511 121/HV 511 181 HVR 520 101/HVR 520 121/HVR 520 181



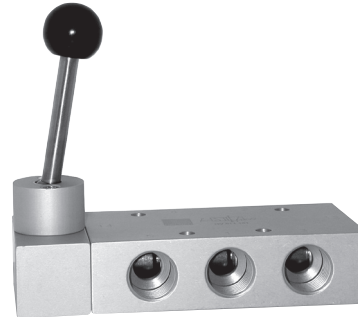
HV 511 101  
HV 511 121  
HV 511 181  
HV 511 121 NPT



HVR 520 101  
HVR 520 121  
HVR 520 181  
HVR 520 121 NPT



**HV 511 101/HVR 520 101**



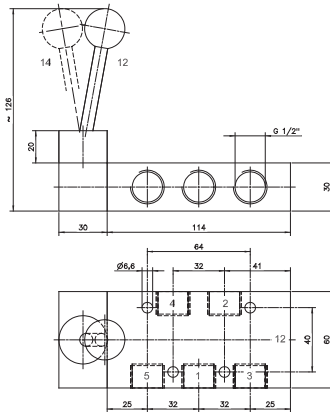
Lever actuated 5/2-way spool valve.

Type HV      spring return  
Type HVR    indexed

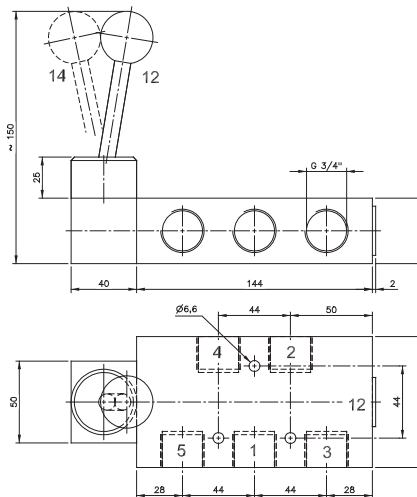
The lever is sealed against the valve by using a metal ball.

Exhaust can be throttled.

*Selected products displayed on this page are also available NPT threaded.*



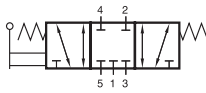
**HV 511 121/HVR 520 121  
HV 511 121 NPT/HVR 520 121 NPT**



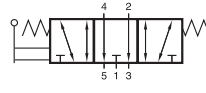
**HV 511 181/HVR 520 181**

Type	Function	Port size	Air flow	Operating press.	Actuating force	Weight
HV 511 101	spring ret.	G 3/8"	2250 l/min	1 - 10 bar	25 N	0,60 kg
HV 511 121	spring ret.	G 1/2"	3000 l/min	1 - 10 bar	32 N	0,79 kg
HV 511 181	spring ret.	G 3/4"	6000 l/min	1 - 10 bar	40 N	1,64 kg
HVR 520 101	indexed	G 3/8"	2250 l/min	1 - 10 bar	25 N	0,60 kg
HVR 520 121	indexed	G 1/2"	3000 l/min	1 - 10 bar	32 N	0,79 kg
HVR 520 181	indexed	G 3/4"	6000 l/min	1 - 10 bar	40 N	1,64 kg
HV 511 121 NPT	spring ret.	1/2" NPT	3000 l/min	1 - 10 bar	32 N	0,79 kg
HVR 520 121 NPT	indexed	1/2" NPT	3000 l/min	1 - 10 bar	32 N	0,79 kg

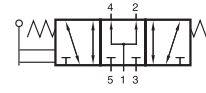
# HV 53\_ 501/HV 53\_ 701/HV 53\_ 801 HVR 53\_ 501/HVR 53\_ 701/ HVR 53\_ 801



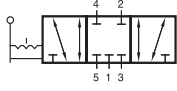
HV 531 501  
HV 531 701  
HV 531 801  
HV 531 701 NPT



HV 532 501  
HV 532 701  
HV 532 801  
HV 532 701 NPT



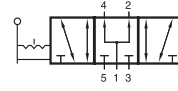
HV 533 501  
HV 533 701  
HV 533 801  
HV 533 701 NPT



HVR 531 501  
HVR 531 701  
HVR 531 801  
HVR 531 701 NPT



HVR 532 501  
HVR 532 701  
HVR 532 801  
HVR 532 701 NPT



HVR 533 501  
HVR 533 701  
HVR 533 801  
HVR 533 701 NPT



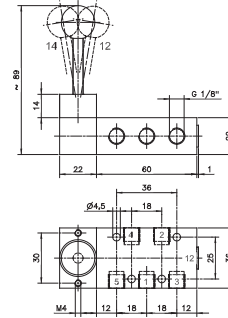
Lever actuated 5/3-way pool valve.

- Type HV      spring return to middle position
- Type HVR    indexed
  
- Type 531    centre closed
- Type 532    centre exhausted
- Type 533    centre pressurised

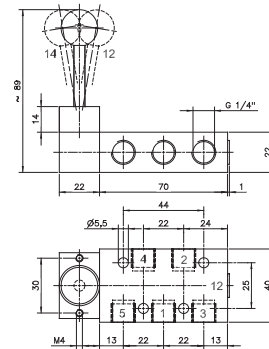
When ordering please complete the type number by 1, 2 or 3 according to the type required.

Exhaust can be throttled.

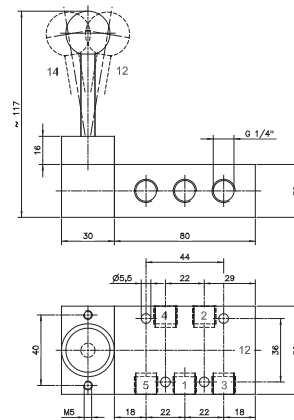
Selected products displayed on this page are also available NPT threaded.



**HV 53\_ 501/HVR 53\_ 501**



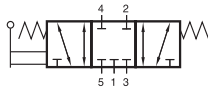
**HV 53\_ 701/HVR 53\_ 701  
HV 53\_ 701 NPT/HVR 53\_ 701 NPT**



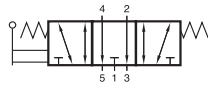
**HV 53\_ 801/HVR 53\_ 801**

Type	Function	Port size	Air flow	Operating press.	Actuating force	Weight
HV 53_ 501	spring ret.	G 1/8"	650 l/min	1 - 10 bar	20 N	0,22 kg ❄️
HV 53_ 701	spring ret.	G 1/4"	1250 l/min	1 - 10 bar	20 N	0,24 kg ❄️
HV 53_ 801	spring ret.	G 1/4"	1450 l/min	1 - 10 bar	25 N	0,55 kg ❄️
HVR 53_ 501	indexed	G 1/8"	650 l/min	1 - 10 bar	20 N	0,22 kg ❄️
HVR 53_ 701	indexed	G 1/4"	1250 l/min	1 - 10 bar	20 N	0,24 kg ❄️
HVR 53_ 801	indexed	G 1/4"	1450 l/min	1 - 10 bar	25 N	0,55 kg ❄️
HV 53_701 NPT	spring ret.	1/4" NPT	1250 l/min	1 - 10 bar	20 N	0,24 kg
HVR 53_ 701 NPT	indexed	1/4" NPT	1250 l/min	1 - 10 bar	20 N	0,24 kg

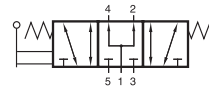
# HV 53\_ 101/HV 53\_ 121/HV 53\_ 181 HVR 53\_ 101/HVR 53\_ 121/HVR 53\_ 181



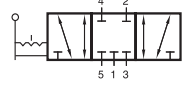
HV 531 101  
HV 531 121  
HV 531 181  
HV 531 121 NPT



HV 532 101  
HV 532 121  
HV 532 181  
HV 532 121 NPT



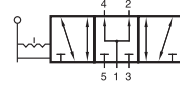
HV 533 101  
HV 533 121  
HV 533 181  
HV 533 121 NPT



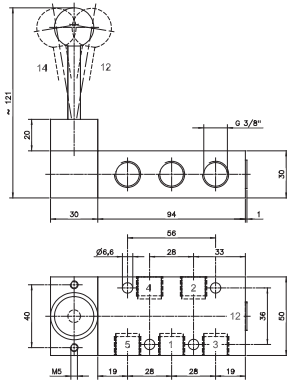
HVR 531 101  
HVR 531 121  
HVR 531 181  
HVR 531 121 NPT



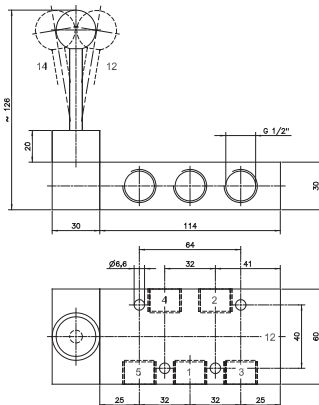
HVR 532 101  
HVR 532 121  
HVR 532 181  
HVR 532 121 NPT



HVR 533 101  
HVR 533 121  
HVR 533 181  
HVR 533 121 NPT



**HV 53\_ 101/HVR 53\_ 101**



**HV 53\_ 121/HVR 53\_ 121  
HV 53\_ 121 NPT/HVR 53\_ 121 NPT**

*Selected products displayed on this page are also available NPT threaded.*



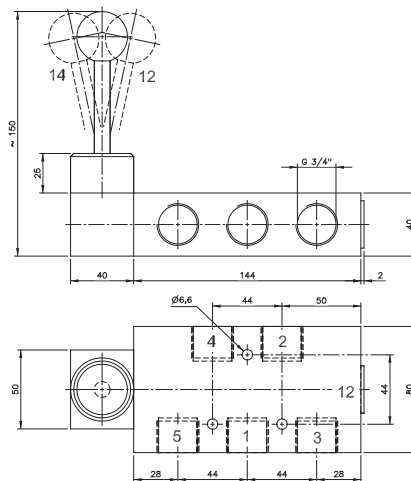
Lever actuated 5/3-way spool valve with.

Type HV spring return to middle position  
Type HVR indexed

Type 531 centre closed  
Type 532 centre exhausted  
Type 533 centre pressurised

*When ordering please complete the type number by 1, 2 or 3 according to the type required.*

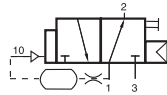
Exhaust can be throttled.



**HV 53\_ 181/HVR 53\_ 181**

Type	Function	Port size	Air flow	Operating press.	Actuating force	Weight
HV 53_ 101	spring ret.	G 3/8"	2250 l/min	1 - 10 bar	25 N	0,60 kg
HV 53_ 121	spring ret.	G 1/2"	3000 l/min	1 - 10 bar	32 N	0,80 kg
HV 53_ 181	spring ret.	G 3/4"	6000 l/min	1 - 10 bar	40 N	1,64 kg
HVR 53_ 101	indexed	G 3/8"	2250 l/min	1 - 10 bar	25 N	0,60 kg
HVR 53_ 121	indexed	G 1/2"	3000 l/min	1 - 10 bar	32 N	0,80 kg
HVR 53_ 181	indexed	G 3/4"	6000 l/min	1 - 10 bar	40 N	1,64 kg
HV 53_ 121 NPT	spring ret.	1/2" NPT	3000 l/min	1 - 10 bar	32 N	0,80 kg
HVR 53_ 121 NPT	indexed	1/2" NPT	3000 l/min	1 - 10 bar	32 N	0,80 kg

# Examples for customer-specific products



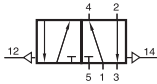
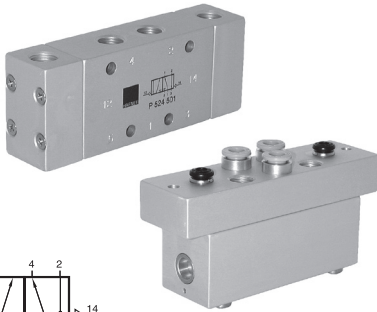
## SUH 310 502

3/2-way G 1/8" impulse valve with manual override. Valve is interrupting a pneumatic signal after a defined time-period, pressing the manual override brings the signal back.



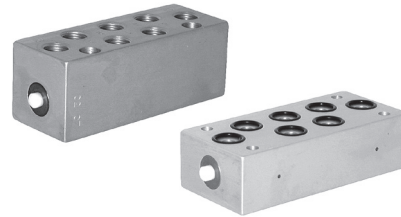
## P 510 801 METS

Single-pilot 5/2-way valve with metric ports. Head is offering two pilot ports, both M10 x 1.



## P 524 501/P 524 502/P 524 404

5/2-way Bleed valves. Negative switching double pilot valve.



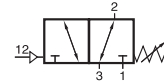
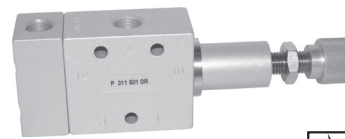
## PH 520 502

Double pilot G 1/8" valve with manual override. Valve offers 2 pins that stick out at the ends of the valve. Those can be used as manual override or to indicate the position. Versions to be put onto manifold plates orifice size 5 mm have also been manufactured.



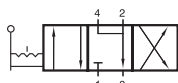
## P 310 701 VIT

Pneumatically actuated 3/2-way valve G 1/4" with FKM seals.



## P 311 501 SR

Pneumatically actuated 3/2-way valve G 1/8" with mechanical spring return. Valve can be used normally closed (pressure at port 1) and normally open (pressure at port 3). Valve can be used as an adjustable pneumatic pressure switch. By turning the hand-wheel the required minimum actuation pressure can be set between 3 and 6 bar.



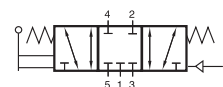
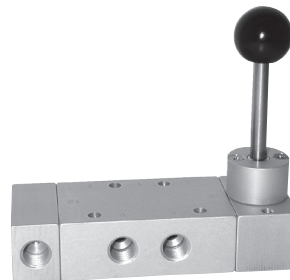
## BA 430 301

4/3-way valve for panel mounting, middle-position exhausted, G 1/8".



## HVR 520 801 Z

G 1/4" 5/2-way lever actuated valve, indexed. Valve can not be switched without thoroughly pulling the lever. This feature can also be included into 3/2-way valves, 5/3-way valves, valves with Namur-interface or valves with spring return. Valve can be used where prevention against unintended actuation is in need.



## HVP 531 501

Lever actuated 5/3-way valve, centre position closed, with spring return to middle position. When a pneumatic signal is applied to port 12, spool moves to or is held in the position where 1 is open to 2 and 4 to 5. Commercial vehicle application.