

BAS-Series: Ø 30 mm Actuators for Panel Mounting

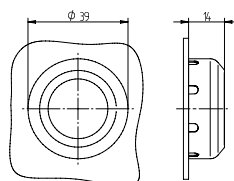
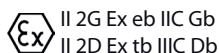


BAS-Series: Actuating elements for 30 mm panel mounting hole. Ideal for demanding applications.

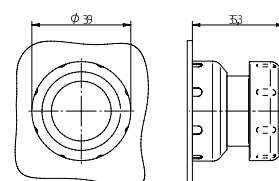
Actuators can be used with valves type BAS ... displayed on page 2.2.5. and 2.12.2.1.

- Materials: Polyamide, seals silicon
- Temperature range: -60°C ... +70°C
(consider temperature limitations of the valve)
- IP protection: IP 66

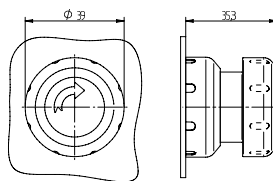
Elements are ATEX as well as IECEx approved and can be used in explosion hazardous environment zone 1, 2, 21 and 22.



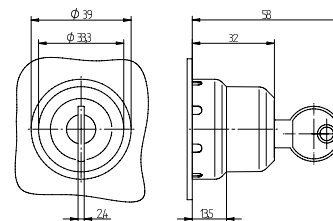
BA 301 01 Ex



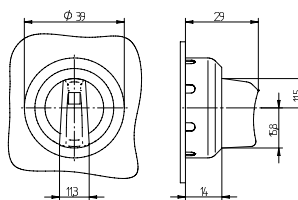
BA 302 02 Ex








BA 303 02 Ex



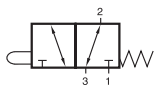
BA 305 00 Ex



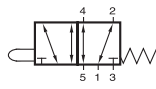
BA 307 01 Ex

Type	Actuation	Colour	Actuating force	Weight
BA 301 01 Ex	Push button	black	8.5 N	0,034 kg 
BA 302 02 Ex	Palm button	red / yellow	8.5 N	0,05 kg 
BA 303 02 Ex	Palm button with detend	red / yellow	52 N	0,05 kg 
BA 305 00 Ex	Locking switch	black	1 N	0,05 kg 
BA 307 01 Ex	Rotary lever	black	1 N	0,04 kg 

BAS 311 301/BAS 511 301



BAS 311 301



BAS 511 301



3/2-way and 5/2-way spool valves with mechanical spring for panel mounting.

Actuating elements are displayed on page 2.2.2.

Valves can be used with technical vacuum too.

Available on request: Valves based on series 401 (air-flow rate 450 l/min).

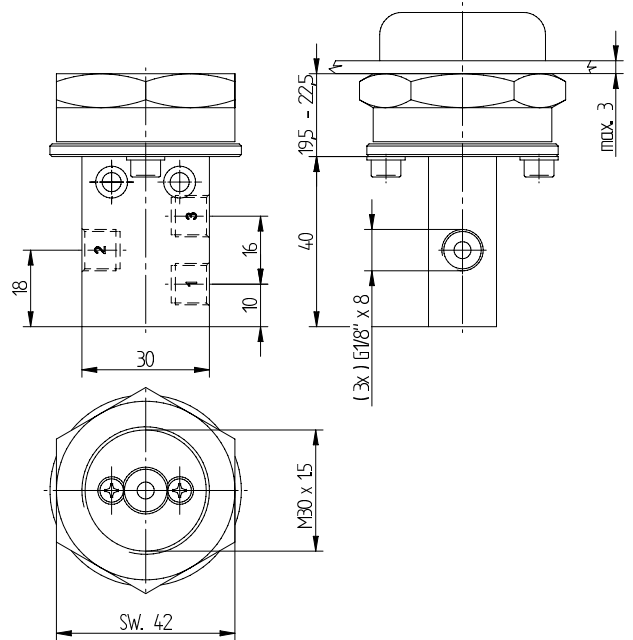
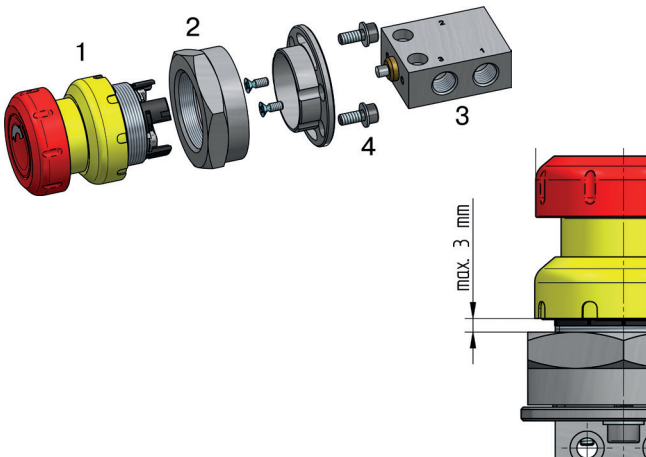
The valves can be also offered in a version for -40°C ... +65°C and for explosion hazardous environment zone 1, 2, 21 and 22. Please refer to page 2.12.2.1.

How to assemble the valve to the panel:

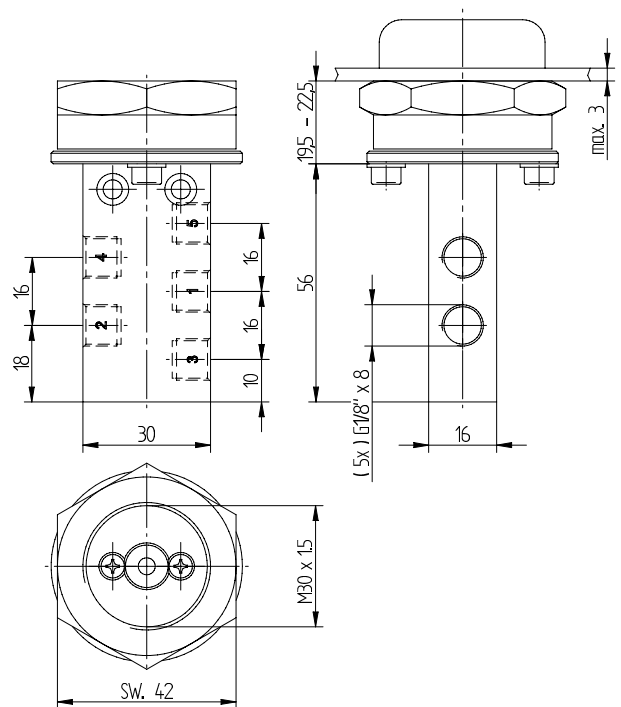
1. Insert the actuator (1) through the hole
2. Tighten the aluminum nut (2) firmly
3. Attach the valve (3) to the nut (2)
4. Fasten the valve with two screws (4)

Please note:

- The sheet thickness must not exceed 3 mm.
- Depending on the sheet thickness, a small gap may remain between the valve and the nut.



BAS 311 301

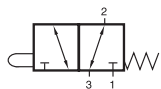


BAS 511 301

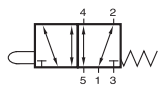
Type	Function	Port size	Air flow	Operating press.	Actuating force	Weight
BAS 311 301	3/2-way	G 1/8"	280 l/min	-0,9 - 10 bar	~ 14 N	0,08 kg
BAS 511 301	5/2-way	G 1/8"	280 l/min	-0,9 - 10 bar	~ 14 N	0,11 kg



BAS 311 501 TT AIR Ex/BAS 511 501 TT AIR Ex



BAS 311 501 TT AIR Ex



BAS 511 501 TT AIR Ex



3/2-way and 5/2-way spool valves with mechanical spring for panel mounting. For low temperature environment -40°C to +65°C and for explosion hazardous environment zone 1, 2, 21 and 22.

- CE** **Ex** II 2 G Ex h IIC T6 Gb
-40°C ≤ Ta ≤ +65°C
- CE** **Ex** II 2 D Ex h IIIC T80°C
Db -40°C ≤ Ta ≤ +65°C

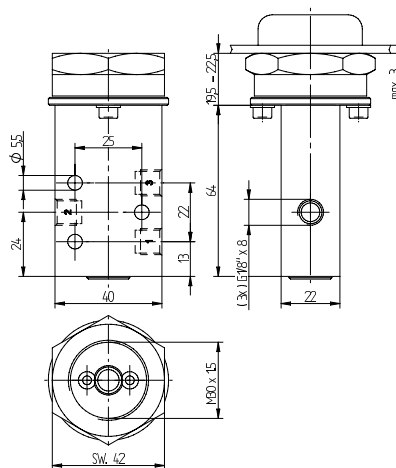
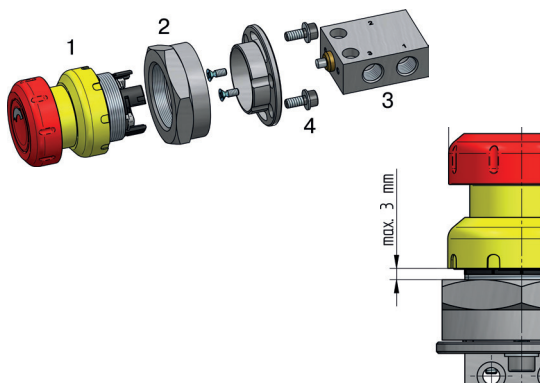
Actuating elements are displayed on page 2.2.2.

How to assemble the valve to the panel:

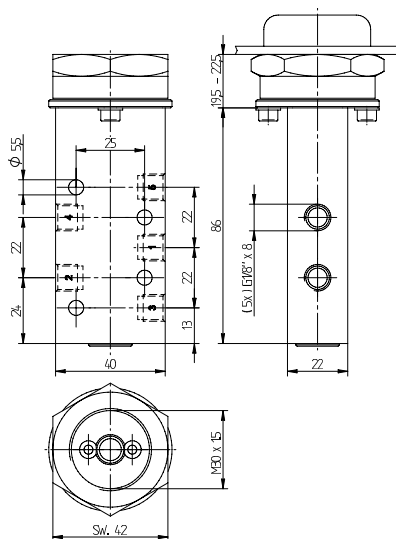
1. Insert the actuator (1) through the hole
2. Tighten the aluminum nut (2) firmly
3. Attach the valve (3) to the nut (2)
4. Fasten the valve with two screws (4)

Please note:

- The sheet thickness must not exceed 3 mm.
- Depending on the sheet thickness, a small gap may remain between the valve and the nut.



BAS 311 501 TT AIR Ex



BAS 511 501 TT AIR Ex

Type	Function	Port size	Air flow	Operating press.	Actuating force	Weight
BAS 311 501 TT AIR Ex	3/2-way	G 1/8"	650 l/min	1 - 10 bar	~ 40 N	0,20 kg
BAS 511 501 TT AIR Ex	5/2-way	G 1/8"	650 l/min	1 - 10 bar	~ 40 N	0,26 kg